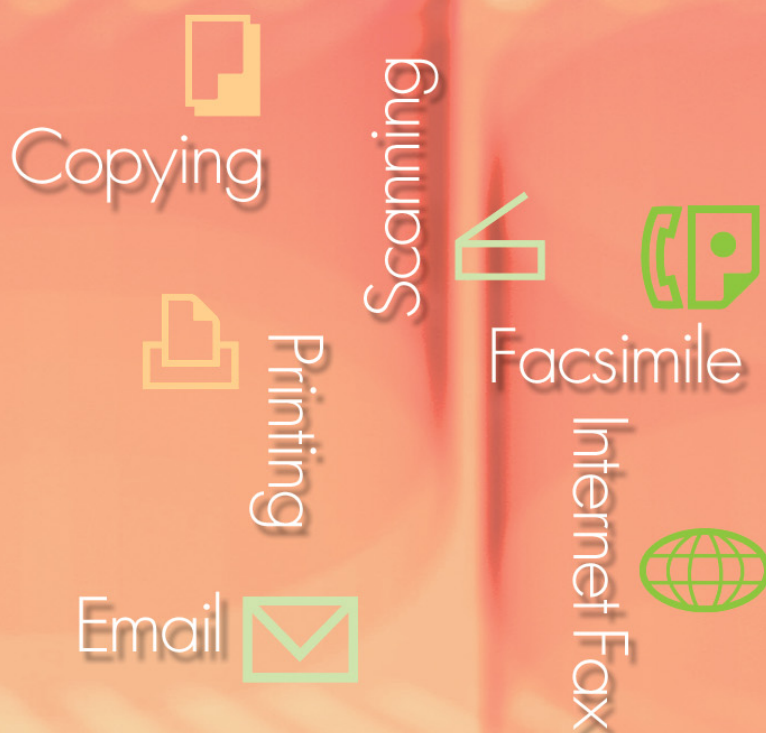


Operating Instructions

Software (Printer Driver)

For Digital Imaging Systems



WORKIO[™]

Before using this software, please carefully read these instructions completely and keep these operating instructions in a safe place for future reference.

English

System Requirements

Configuring the
Printer Driver Settings

Print Operation

Troubleshooting

The following trademarks and registered trademarks are used throughout this manual:

Microsoft, MS-DOS, Windows, Windows Server, Windows Vista and Internet Explorer are either registered trademarks or trademarks of Microsoft Corporation in the USA and other countries. Microsoft product screen shot(s) reprinted with permission from Microsoft Corporation. i386, i486, Celeron, Intel Centrino, Pentium and Itanium are trademarks of Intel Corporation and its subsidiaries.

Mac, Mac OS, Macintosh, TrueType and Apple are trademarks of Apple Inc., registered in the U.S. and other countries.

The USB-IF Logos are trademarks of Universal Serial Bus Implementers Forum, Inc.

Novell, NetWare, IntranetWare, NDS are registered trademarks of Novell, Inc. in the USA and other countries.

PEERLESSPage™ is a trademark of the PEERLESS Systems Corporation; and, PEERLESSPrint and Memory Reduction Technology® are registered trademarks PEERLESS Systems Corporation; and, COPYRIGHT © 2005 PEERLESS Systems Corporation. COPYRIGHT © 2005 Adobe Systems Incorporated. All Rights Reserved; and Adobe® PostScript® 3™.

Universal Font Scaling Technology (UFST) and all typefaces have been licensed from Monotype Imaging Inc.

Monotype® is a registered trademark of Monotype Imaging Inc. registered in the U.S. Patent and Trademark Office and may be registered in other jurisdictions.

ColorSet™ is a registered trademark of Monotype Imaging Inc. registered in the U.S. Patent and Trademark Office and may be registered in other jurisdictions. ColorSet™ Profile Tool Kit, Profile Studio and Profile Optimizer are trademarks of Monotype Imaging Inc. and may be registered in certain jurisdictions.

COPYRIGHT © 2007 Monotype Imaging Inc. All Rights Reserved.

PCL is a trademark of Hewlett-Packard Company.

Adobe, Acrobat, Adobe Reader, Adobe Type Manager, PostScript, PostScript 3 and Reader are either registered trademarks or trademarks of Adobe Systems Incorporated in the United States and/or other countries.

All other product/brand names, trademarks or registered trademarks identified herein are the property of their respective owners.

In these Operating Instructions, some ™ and ® marks are omitted from the main text.

© 2008 Panasonic Communications Co., Ltd. All Rights Reserved.

Unauthorized copying and distribution is a violation of law.

Published in Japan.

The contents of these Operating Instructions are subject to change without notice.

Table of Contents

| | |
|---|-----------|
| System Requirements..... | 4 |
| Configuring the Printer Driver Settings | 6 |
| ■ Form/Tray Tab | 7 |
| ■ Device Tab..... | 8 |
| ■ Basic tab..... | 9 |
| ■ Output tab..... | 16 |
| ■ Job Type Tab | 18 |
| ■ Quality Tab..... | 20 |
| ■ Effects Tab..... | 22 |
| ■ Profile Tab..... | 27 |
| ■ Support Tab | 29 |
| ■ Printing Preferences (For DX-800)..... | 30 |
| ■ Printing Preferences (For UF-4000/4100/6000/6100) | 34 |
| Print Operation..... | 38 |
| Troubleshooting | 42 |

System Requirements

- Personal Computer : IBM® PC/AT® and compatibles (CPU Intel® Pentium® 4 1.6 GHz or greater is recommended)
- Operating System : Microsoft® Windows® 2000 operating system (Service Pack 4 or later)*¹,
Microsoft® Windows® XP operating system (Service Pack 2 or later)*²,
Microsoft® Windows Server® 2003 operating system (Service Pack 1 or later)*³,
Microsoft® Windows Vista® operating system*⁴.

*The following Operating System is not supported :
Microsoft® Windows Server® 2003 Enterprise Edition for Itanium®-based systems
- Application Software: Microsoft® Internet Explorer® 6.0 Service Pack 1 or later
- System Memory : Recommended Memory for each OS:

| | |
|--|------------------|
| Microsoft® Windows® 2000 operating system | : 256 MB or more |
| Microsoft® Windows® XP operating system | : 512 MB or more |
| Microsoft® Windows Server® 2003 operating system | |
| Microsoft® Windows Vista® operating system | : 1 GB or more |
- Free Disk Space : 300 MB or more (For installation and work space, not including storage space)
- CD-ROM Drive : Used for installing the software and utilities from the CD-ROM
- Interface : 10Base-T/100Base-TX Ethernet Port, USB Port, Parallel Port
(The interface that can be used is different depending on the model)

*1 Microsoft® Windows® 2000 operating system (hereafter Windows 2000)

*2 Microsoft® Windows® XP operating system (hereafter Windows XP)

*3 Microsoft® Windows Server® 2003 operating system (hereafter Windows Server 2003)

*4 Microsoft® Windows Vista® operating system (hereafter Windows Vista)

Memo

Configuring the Printer Driver Settings

Used for configuring optional devices installed on the printer.

If the printer is connected to the Network (TCP/IP), use Auto Configuration to configure the optional devices installed on the printer or obtain information on the printer driver settings.

Note:

To change the Device Options settings, logon to the computer/network using an account with administrator rights.

1 Open the Printer Dialog Box.

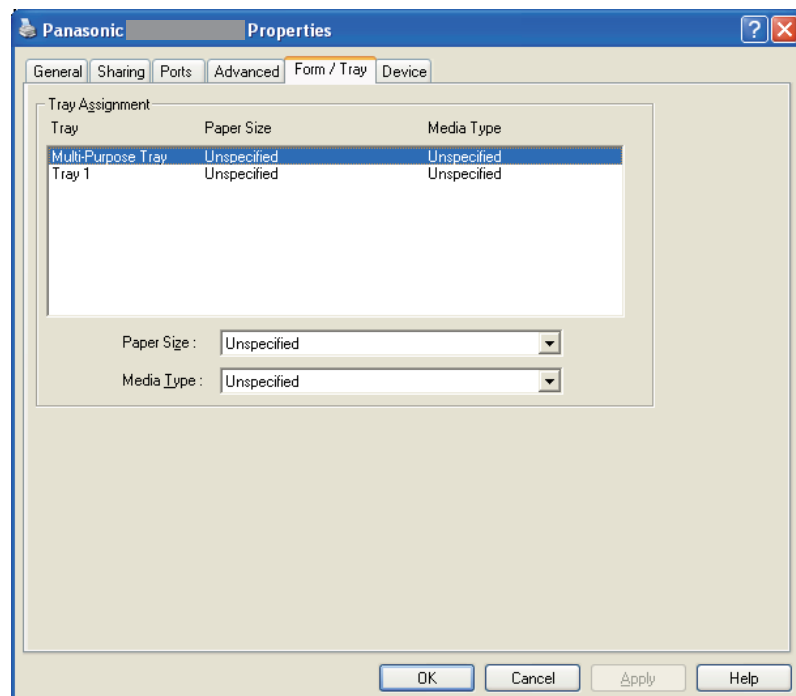
| | | |
|--------------------------------|---|---|
| Windows XP/Windows Server 2003 | : | Select Start → (Settings) → Printers and Faxes |
| Windows 2000 | : | Select Start → Settings → Printers |
| Windows Vista | : | Select Start → Control Panel → Printers |

2 The Printers and Faxes (Printers) window appears. Right-click the printer icon that you want to configure, and select **Properties**.

3 The Printer Properties dialog box appears.

Form/Tray Tab

Assigning media to specific trays can prevent printing mistakes and instances when the printer stops because of paper mismatches.



Note:

This is a sample screen. Availability of the printer features are different depending of the models or the operating systems.

Tray Assignment

Specifies the **Paper Size** and **Media Type** assigned to the printer's **Tray**.

Select the paper tray from the list box, and then choose the paper size and media type.

Paper Size

Specify the paper sizes loaded in each tray.

If you do not want to assign the paper size, select **Unspecified**.

Media Type

Specify the type of media loaded in each tray.

If you do not want to assign the media type, select **Unspecified**.

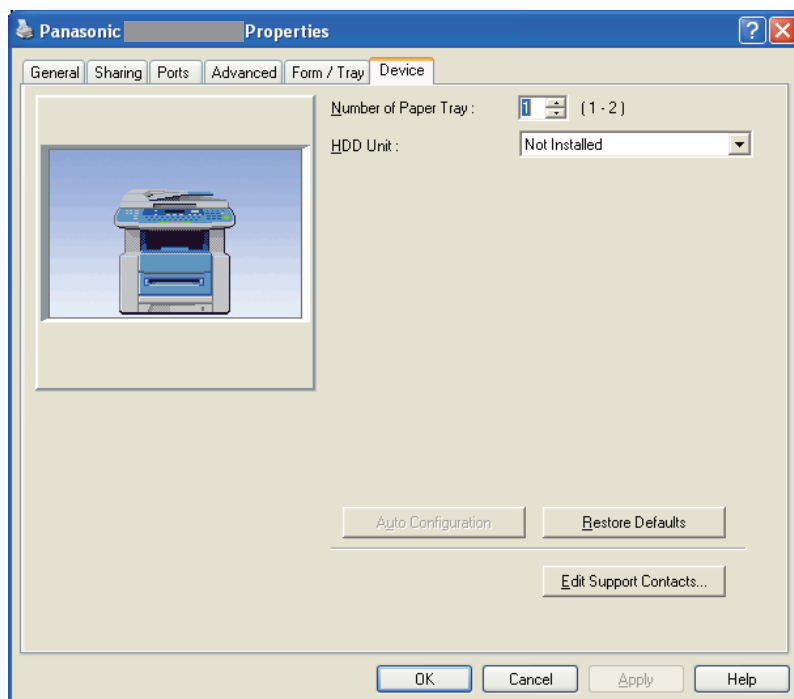
Note:

- If the Multi-Purpose Tray was selected, ensure that the media type selection in the control panel matches the media loaded on the tray.
- After specifying the paper size and media type loaded in each tray, the settings are not yet initiated on the printer and require activation.
- To activate the settings, click the **Advanced** tab and select **Hold mismatched documents**. This ensures printing jobs are held in the case of mismatches between the specified tray and the type of paper loaded.

Device Tab

Used for configuring optional devices installed on the printer.

If the printer is connected to the Network (TCP/IP), use **Auto Configuration** to configure the optional devices installed on the printer or obtain information on the printer driver settings.



Note:

*This is a sample screen.
Availability of the printer features are
different depending of the models or the
operating systems.*

Number of Paper Tray

Specifies the number of paper trays installed on the device.

HDD Unit

Select **Installed** if a hard disk drive unit is installed.

SD Memory Card

Select **Installed** if the SD Memory Card (256MB or 512MB) is installed.

Auto Configuration button

If the printer is connected to a Network (TCP/IP), clicking this button will search for installed printer options, which are automatically detected and configured.

Note:

Make sure that your printer is connected on your network properly (TCP/IP only).

*The button is not selectable if the **Enable printer pooling** is set to ON and multiple ports are selected on the **Ports** tab.*

Restore Defaults button

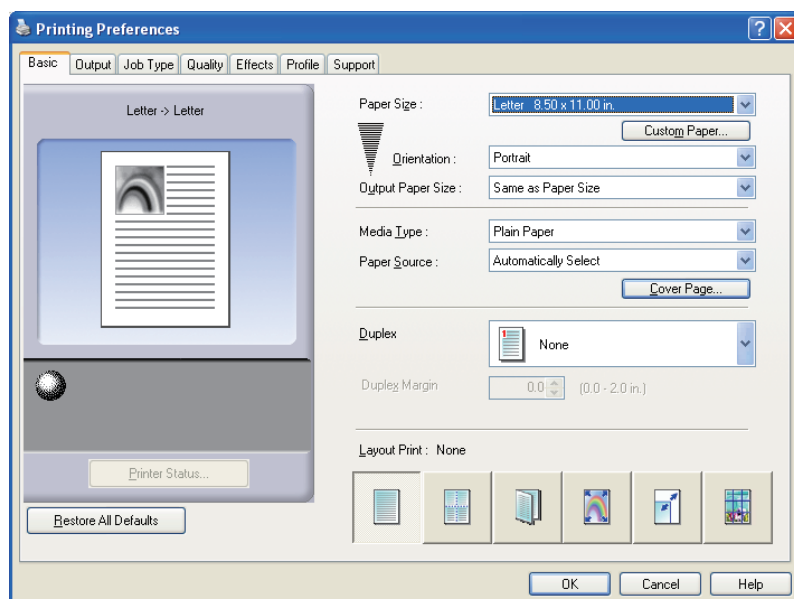
Restores all **Device** tab settings to the factory default values.

Edit Support Contacts... button

Allows the entry and editing of support information.

Basic Tab

Basic tab is used for configuring basic printing settings.



Note:

*This is a sample screen.
Availability of the printer features are
different depending of the models or the
operating systems.*

Paper Size

Displays the current **Paper Size** and **Output Paper Size** settings.

Paper Image

Represents the current settings, along with the icons shown below.

Icons

Represent the current settings, along with the paper image shown above.

Printer Status... button

Used to check the printer status, launch the **Device Monitor**, which displays the status. This feature is only available when the printer is connected over a TCP/IP network.

Restore All Defaults button

Restores all the settings to the default value.

Paper Size/Output Paper Size

There are two settings for paper size. They are **Paper Size** and **Output Paper Size**.

Paper Size denotes the document size created by the software applications.

Output Paper Size denotes the size of paper used by the printer.

Custom paper sizes can be selected in the **Paper Size** and **Output Paper Size** settings.

Note:

*The **Media Type** and **Paper Source** settings differ depending on the **Paper Size/Output Paper Size** setting.*

Custom Paper... button

(Available for PCL 6 Emulation Printer Driver only)

You can create, edit and delete custom papers. Up to 50 custom papers can be registered.

Note:

- Custom paper size is saved for individual users who are logged on.
- The saved Custom Papers will not be deleted when the PCL 6 Emulation Printer Driver is uninstalled. The Custom Paper files will be automatically recognized if the PCL 6 Emulation Printer Driver of the same model is installed again.
- For some software applications, you may be able to print the image by changing the paper settings.

Orientation

Specifies the direction of the image to be printed.

Media Type

Specifies the type of paper.

Paper Source

Specifies the tray to be used for printing.

| | |
|-----------------------------|--|
| Automatically Select | Paper is supplied from the tray that is loaded with the specified paper. If the specified paper is loaded in multiple trays, it is supplied from the upper tray first. If a tray runs out of paper, paper is supplied from the next tray containing the specified paper, and continues in this sequence. |
| Multi-Purpose Tray | As its name suggest, this tray is used for all supported sizes and media types that can fit in this tray. |
| Tray 1 | This is the standard paper tray, and the first tray the specified paper is fed from. |
| Tray 2 | This tray is the second paper source tier and optional tray. The optional tray is only displayed if it is installed on the machine. |

Note:

- Be sure to specify on the printer what paper is loaded in the trays.
- If the settings are wrong, paper will not be supplied correctly when the printer driver is set to **Automatically Select**.
- Furthermore, be sure to set the paper on the Sheet Bypass properly when **Multi-Purpose Tray** is selected.
- After installing the optional paper feeder, you must change the **Number of Paper Tray** on the **Device** tab of the printer driver. For details, see **Device Tab** on page 8.

Cover Page... button

(Available for PCL 6 Emulation Printer Driver only)

You can configure the settings for cover pages.

To use a cover page, select **Front Cover** or **Back Cover**.

Specify the **Cover Type** either **Blank** or **Printed**.

Blank : Produces a blank cover page from the specified paper source.

Printed : Prints the first or last page as the cover page from the specified paper source.

In **Other Pages** section, specifies the media type and paper source used for pages other than the Front and Back covers. Configure the same way as carried out for **Media Type** and **Paper Source** in the **Basic** tab.

Note:

- Cover pages are not available with **Reverse Page Order**.
- Cover pages are not available with **Poster**.
- **Back Cover Page** is not available with **Booklet**.

Duplex

Duplex (double-sided) is the process of printing on both sides of a piece of paper.

| | |
|---------------------------------------|---|
| None | Select this for single-sided printing. The default is None. |
| Flip on Long Edge | Perform double-sided printing, flipping the paper along its long edge |
| Flip on Short Edge | Perform double-sided printing, flipping the paper along its short edge |
| Flip on Long Edge with Margin | Perform double-sided printing, flipping the paper along its long edge with margin. |
| Flip on Short Edge with Margin | Perform double-sided printing, flipping the paper along its short edge with margin. |

Note:

Duplex printing is available if **Media Type** is set to **Plain Paper**.






Duplex Margin (Available for PCL 6 Emulation Printer Driver only)

Specifies the gutter for duplex printing.

Set the gutter in a range of **0 mm - 50 mm (0.0" - 2.0")**.

Layout Print

Allows printing of documents in a variety of layouts.

| | | |
|---|---------------------------------|--|
|  | Pages per Sheet | Save paper by printing several pages reduced onto a single sheet. |
|  | Booklet | This feature is handy for creating your own booklets. After printing, fold sheets in half to create booklets. |
|  | Fit to Output Paper Size | Scales the source document to fit it onto the specified paper. |
|  | Zoom | Prints documents at the specified magnification. |
|  | Poster | Enlarges single-page documents for printing on several sheets. Assemble the printed documents to make posters. |

■ Pages per Sheet

Several pages are reduced in size and printed next to each other on single sheets. This feature is convenient for printing test sheets and conserving paper.

Paper Size

Displays the current **Paper Size** and **Output Paper Size** settings.

Paper Image

Represents the current settings, along with the icons shown below.

Icons

Represent the current settings, along with the paper image shown above.

Pages per Sheet

Specifies how many pages to reduce and print on single sheets.

Choose from **2 up**, **4 up**, **6 up**, **8 up**, **9 up**, or **16 up**.

Page Order

Specifies the order in which multiple pages are arranged on single sheets.

Page Border

Select this option to print a border around each page.

| | |
|--------------|--------------------------------------|
| Solid | Print a solid line around each page. |
| None | Do not print page borders. |

Style for Mixed Orientation

In print jobs with different paper orientations, this option specifies in which direction the printed image is rotated.

| | |
|------------------------|---|
| Rotate Left 90 | Rotates the printed image counter-clockwise 90° |
| Rotate Right 90 | Rotates the printed image clockwise 90° |
| Not Rotate | Do not rotate the image. |

Output Paper Size

Specify the size of paper used by the printer.

The settings are the same as for **Output Paper Size** configured in the **Basic** tab.

■ Booklet

Fold printouts in half to make booklets. This feature is handy for creating your own booklets. If you create booklets from a large number of pages, you can increase the Unit number to divide them into several booklets.

Paper Size

Displays the current **Paper Size** and **Output Paper Size** settings.

Paper Image



Represents the current settings, along with the icons shown below.

Icons

Represent the current settings, along with the paper image shown above.

Binding

Specifies the side that is closed after folding printouts in half.

| | |
|---|---------------|
|  | Left Binding |
|  | Right Binding |

Unit

Specifies the unit (sheet quantity) to be folded in half.

Choose from **All Sheets**, **1 Sheet**, **2 Sheets**, **4 Sheets**, or **8 Sheets**.

Gutter

Specifies the space added between the center and the printing area when the printout is folded in half.

Set the gutter in a range of **0 mm - 50 mm (0.0" - 2.0")**.

Be aware that the margin added by the software application will be appended to the gutter, so the actual gutter will be wider than the gutter you specify.

Style for Mixed Orientation

In print jobs with different paper orientations, this option specifies which direction the printed image is rotated.

| | |
|------------------------|---|
| Rotate Left 90 | Rotates the printed image counter-clockwise 90° |
| Rotate Right 90 | Rotates the printed image clockwise 90° |
| Not Rotate | Do not rotate the image. |

Output Paper Size

Specify the size of paper used by the printer.

The settings are the same as for **Output Paper Size** configured in the **Basic** tab.

■ Fit to Output Paper Size

Scales the source document to fit the specified paper. For example, this feature is convenient for printing A3/Ledger source documents on A4/Letter paper.

Paper Size

Displays the current **Paper Size** and **Output Paper Size** settings.



Paper Image

Represents the current settings, along with the icons shown below.

Icons

Represent the current settings, along with the paper image shown above.

Maintain aspect ratio

| | |
|---|--|
|  | Selecting this option preserves the aspect ratio (the ratio of height to width) when documents are scaled. |
|  | When the check mark is removed, documents will be scaled to fill up the maximum print area on the page. |

If you want to ensure the document is not distorted, select **Maintain aspect ratio**.

Output Paper Size

Specify the size of paper used by the printer.
The settings are the same as for **Output Paper Size** configured in the **Basic** tab.

■ Zoom

You can reduce or enlarge documents by specifying the desired magnification. You can also specify where scaled documents are positioned on the page.

Paper Size

Displays the current **Paper Size** and **Output Paper Size** settings.

Paper Image

Represents the current settings, along with the icons shown below.

Icons

Represent the current settings, along with the paper image shown above.

Zoom

The magnification range can be adjusted between **25-400%**.

Note:

*Depending on the **Paper Size** setting, 400% enlargement may not be available.*

Image Position

Specifies the image position after scaling.

Output Paper Size

Specify the size of paper used by the printer.
The settings are the same as for **Output Paper Size** configured in the **Basic** tab.

■ Poster

Enlarges a single-page source document for printing in a specified number of sheets. You can use this feature to print large posters, just assemble the printed sheets.

Paper Size

Displays the current **Paper Size** and **Output Paper Size** settings.

Paper Image

Represents the current settings, along with the icons shown below.

Icons

Represent the current settings, along with the paper image shown above.

Style

Specifies the number of sheets to print the image on.

Note:

*Depending on the **Paper Size** setting, the selectable styles are shown as image icon.*

Overlap

Specifies the amount of overlap involved when printed sheets are assembled.
(0 mm - 50 mm (0.0" - 2.0")).

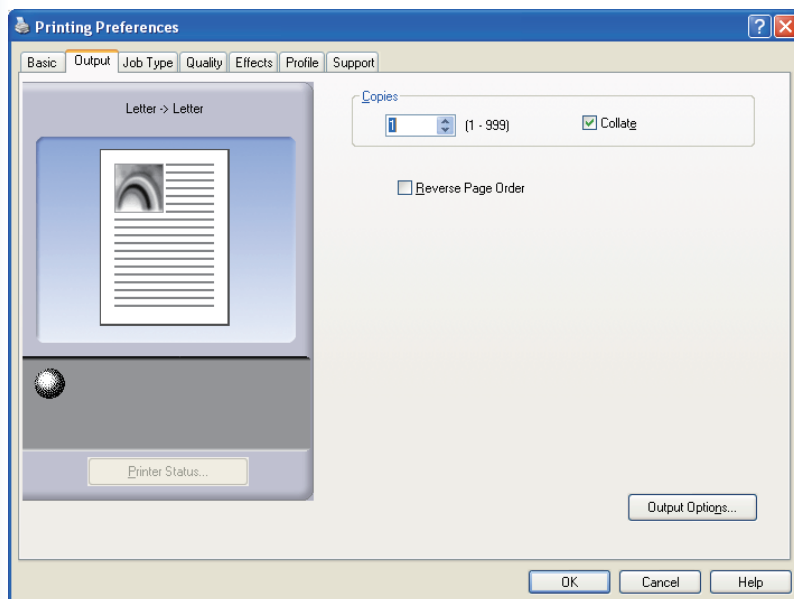
Output Paper Size

Specify the size of paper used by the printer.

The settings are the same as for **Output Paper Size** configured in the **Basic** tab.

Output Tab

Output tab is used for configuring output settings.



Note:

*This is a sample screen.
Availability of the printer features are
different depending of the models or the
operating systems.*

Paper Size

Displays the current **Paper Size** and **Output Paper Size** settings.

Paper Image

Represents the current settings, along with the icons shown below.

Icons

Represent the current settings, along with the paper image shown above.

Printer Status... button

Used to check the printer status, launch the **Device Monitor**, which displays the status. This feature is only available when the printer is connected over a TCP/IP network.

Copies

Specifies the number of copies to be printed.

Collate



Copies are stacked in the order they are printed. Multiple copies are printed in separate sets in the specified quantity. For example, if you print three copies of a five-page document, the printer prints pages 1-5 three times.



Remove the check mark to print individual pages in the specified quantity. For example, if you print three copies of a five-page document, the printer prints page 1 three times before printing page 2 and so on.

Note:

*Collated printing may take some time if the **Printer Driver** is selected in **Copy Controlled by**. See “**Output Options...** button” on page 17. Document data is processed repeatedly, as many times as the number of copies specified.*

Reverse Page Order

Select this option to print in reverse (first page prints last) order.

Note:

- *Reverse Page Order cannot be used when Duplex, Pages per Sheet, Booklet or Poster is selected.*

Output Options... button

Copy Controlled by:

Specifies how collated printing is carried out when **Collate** is on.

• Printer:

Collated printing is controlled by the printer.

• Printer Driver:

Collated printing is controlled by the printer driver.

If the printer does not have enough memory for collated printing, try changing this setting.

Note:

- *Printing may take a while when **Printer Driver** is selected because collation is processed internally by the printer driver.*
- *The **Printer Driver** is not selectable if the **Front Cover** or **Back Cover** is specified on the **Basic** tab. (See page 10)*

Check Printer Status Prior to Printing:

Selecting this option obtains the printer status before printing to ensure printing is possible.

If printing is not possible, a warning dialog box is displayed.

Print Blank Pages:

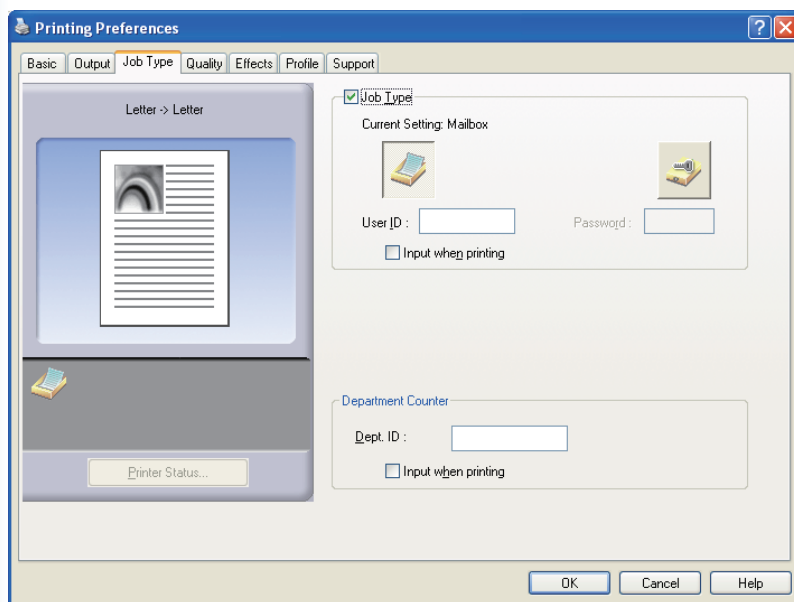
Selecting this option will enable printing blank pages.

Note:

- *The **Print Blank Pages** is not selectable if the **Duplex**, **Pages per Sheet**, **Booklet** or **Poster** is set to be enabled on the **Basic** tab. (See pages 11-15)*
- *If the **Watermark** or **Overlay** is set to be enabled on the **Effects** tab, the device prints a blank page even the **Print Blank Pages** is set off.*

Job Type Tab

Job Type tab is used for configuring and identifying print jobs.



Note:

This is a sample screen. Availability of the printer features are different depending of the models or the operating systems.

Paper Size

Displays the current **Paper Size** and **Output Paper Size** settings.

Paper Image

Represents the current settings, along with the icons shown below.

Icons

Represent the current settings, along with the paper image shown above.

Printer Status... button

Used to check the printer status, launch the **Device Monitor**, which displays the status. This feature is only available when the printer is connected over a TCP/IP network.

Job Type

Printed documents can be saved on the printer's hard disk drive (HDD), or SD Memory Card if the printer is equipped with one. Saved documents can be printed via the printer control panel. See **Mailbox** on page 40.



Mailbox

Saves print data in the printer, in the mailbox specified by the **User ID**. The **User ID** must be entered to print documents saved in Mailbox.



Secure Mailbox

Saves print data in the printer, in the mailbox specified by the **User ID**. The **User ID** and **Password** must be entered to print confidential documents saved in Secure Mailbox.

Note:

- Using **Job Type** requires that the optional **Hard Disk Drive Unit** or **SD Memory Card** is installed in the printer, and the **HDD Unit**, or **SD Memory Card** must be **Installed in Device** tab. See **Device Tab** on page 8.
- Enter the **User ID** (up to 8-digit).
- Enter the **Password** (4-digit).

Input when Printing

Selecting this option under each item in the Job Type tab (**Job Type/Department Counter**), User ID (and Password) can be entered when a print job is sent to the device.

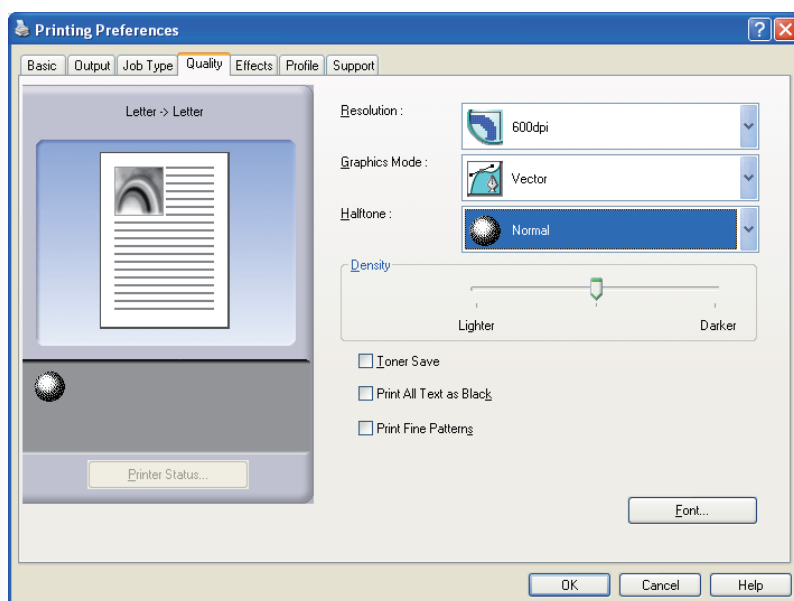
Department Counter

If the printer has been set up with **Department Codes**, the **Dept. ID** must be provided before printing. (Printing is not permitted without an ID.)

Enter the **Dept. ID** assigned by the administrator.

Quality Tab

Quality tab configures the settings that determine the print quality.



Note:

*This is a sample screen.
Availability of the printer features are
different depending of the models or the
operating systems.*

Paper Size

Displays the current **Paper Size** and **Output Paper Size** settings.

Paper Image

Represents the current settings, along with the icons shown below.

Icons

Represent the current settings, along with the paper image shown above.

Printer Status... button

Used to check the printer status, launch the **Device Monitor**, which displays the status. This feature is only available when the printer is connected over a TCP/IP network.

Resolution

Specifies the printing resolution.
Choosing a higher resolution improves the print quality but slows printing.

| | |
|-----------------|---|
| 1200 dpi | Prints at a print engine resolution of 1200x1200 dpi . |
| 600 dpi | Prints at a print engine resolution of 600x600 dpi . |
| 300 dpi | Prints at a print engine resolution of 300x300 dpi . |

Graphics Mode

| | |
|---------------|--|
| Vector | Treat line information of lines as Graphic data. |
| Raster | Treat all information as Bitmap data. |

Halftone

- PCL 6 Emulation Printer Driver
Normal, **Fine**, and **Coarse** can be selected.
- Standard Printer Driver
None, **Dither**, and **OS Halftone** can be selected.

Contrast (Available for Standard Printer Driver only)

Defines the darkness of the dots printed on the paper.

Note:

- This option available when Halftone is None.

Toner Save

Choose this option to conserve toner. The overall effect is lighter, so this feature is recommended for test printing or producing documents for which appearance is not critical.

Print All Text as Black

Prints all colored text in black. In grayscale mode, colored text may appear faint when printed. When this option is on, the printer prints all text in black for better legibility.

Note:

- This does not change the color of text created as graphics.
- When the Text color is in white, it does not change its color to black if you are using the Standard Printer Driver. However, if you are using the PCL 6 Emulation Printer Driver, the text color will change to black if **Print All Text as Black** is enabled. Please disable the checkbox if the background of a printing document is in black.

Print Fine Patterns

(Available for PCL 6 Emulation Printer Driver only)

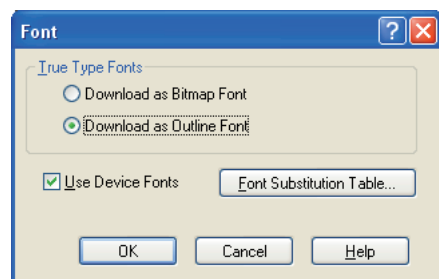
Change this option if you are getting unexpected result with print files and patterns.

If this option is set "ON", it may cause difference between on-screen appearance and printed out.

Font... button

(Available for PCL 6 Emulation Printer Driver only)

Allows you to configure the font settings.



TrueType Fonts:

Specifies how TrueType® fonts are downloaded by the printer.

| | |
|---------------------------------|--|
| Download as Bitmap Font | Download fonts as Bitmaps. |
| Download as Outline Font | Download fonts as Outlines. If the document includes a lot of text in large fonts, this may reduce the amount of print data. |

Note:

- Depending on the type of characters, in some cases, even if **Download as Outline Font** is selected, fonts may be downloaded as bitmaps.

Use Device Fonts:

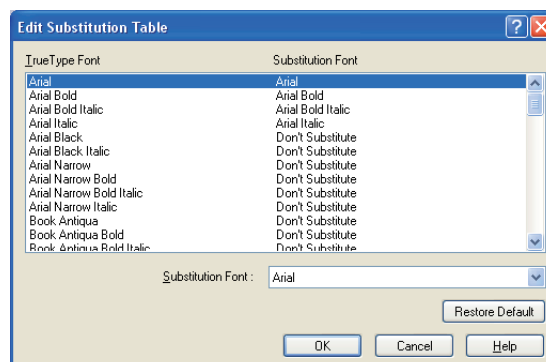
Selecting this option makes the printer use resident fonts matching the document fonts. In this case, printing is faster because only the character code is transferred, without downloading fonts.

Note:

- Even if the fonts installed in Windows and on the printer have the same typeface name, they may be slightly different. Thus, do not select this option if you want printouts to match the appearance on screen exactly.

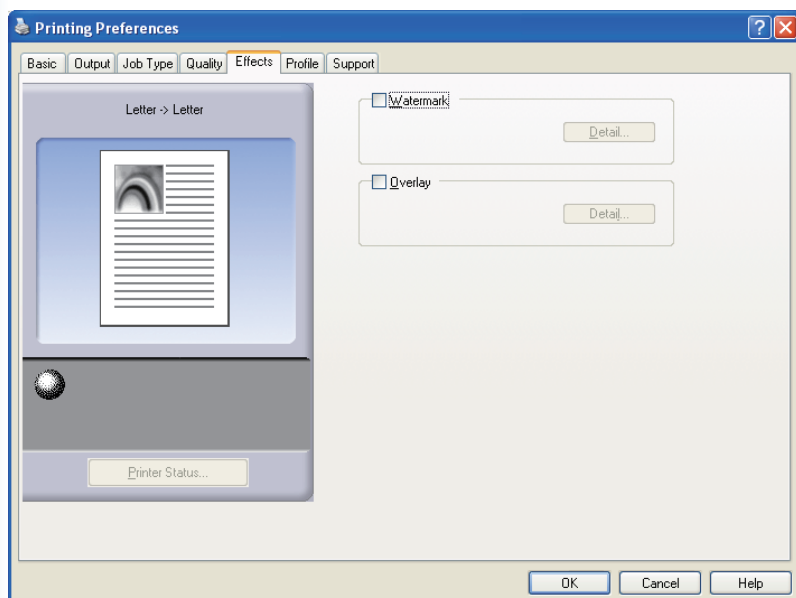
Font Substitution Table:

Substitute a True Type® Font installed on the PC to a Device Font.



Effects Tab

Add **Watermark** and/or **Overlay** to put your own signature on documents. To use these features, click the appropriate check box and configure the settings.



Note:

*This is a sample screen.
Availability of the printer features are
different depending of the models or the
operating systems.*

Paper Size

Displays the current **Paper Size** and **Output Paper Size** settings.

Paper Image

Represents the current settings, along with the icons shown below.


Icons

Represent the current settings, along with the paper image shown above.


button

Used to check the printer status, launch the **Device Monitor**, which displays the status. This feature is only available when the printer is connected over a TCP/IP network.

Watermark

Check the check box to activate the Watermark settings, click the  button to open the setting window.
(See Page 23)

Overlay

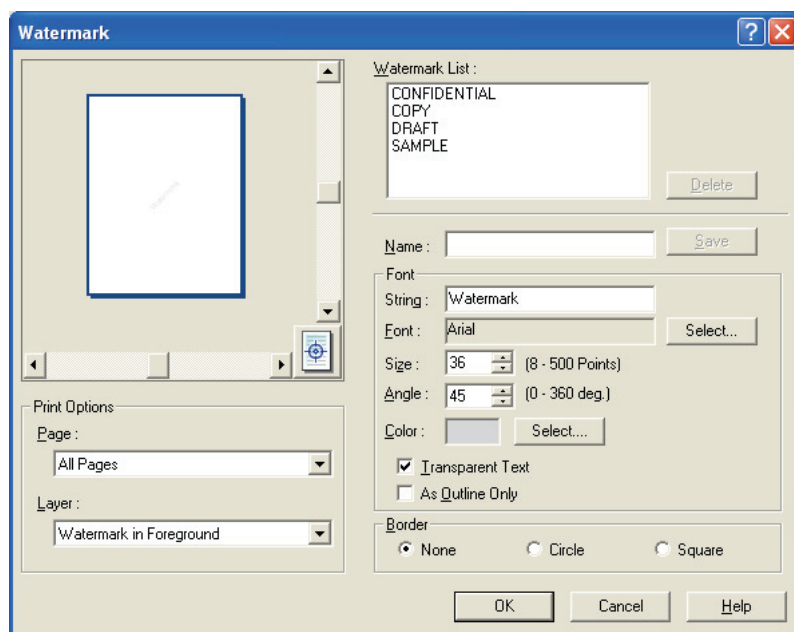
Check the check box to activate the Overlay settings, click the  button to open the setting window.
(See Page 25)

Note:

*If **Watermark** and **Overlay** above are not set, the buttons for these features will be deactivated.
To activate these features, check the check box of each feature to move to the settings screen.*

■ Watermark

Your choice of text can be printed in the document foreground or background as a watermark. You can also specify the pages for watermark printing.



Note:

*This is a sample screen.
Availability of the printer features are
different depending of the models or the
operating systems.*

Preview

For previewing the watermark selected in the list.

Move to center

Specifies to center the watermark on the page.

Page

Specifies which pages to print.

| | |
|-------------------------|---|
| All Pages | Print the watermark on all pages. |
| 1st Page Only | Print the watermark only on the first page. |
| All but 1st Page | Print the watermark on every page except the first. |
| Odd Pages | Print the watermark only on odd pages. |
| Even Pages | Print the watermark only on even pages. |

Layer

Specifies the order to print layers (the watermark and the document).

| | |
|--------------------------------|---|
| Watermark in Background | Print it in the background of the document. |
| Watermark in Foreground | Print it in the foreground of the document. |

Watermark List

Lists the watermarks that have been created. A preview of the selected watermark is displayed in the preview area.

Delete button

Deletes the watermark selected in the watermark list.

Name

Enter the name to identify the watermark.
Enter 31 single-byte characters or less.

Continue on the next page...

Save button

Watermark names you enter in **Name** are saved in the current setting.

The saved watermark is displayed in the watermark list.

String

Enter the text to be printed.

Enter 63 single-byte characters or less.

Font

Select the font by clicking the **Select...** button to display the font selection dialog box.

Size

Specify the watermark size in a range of **8-500** Points.

Angle

Specify the angle of watermark text in a range of **0-360 deg.**

Color

Select the color by clicking the **Select...** button to display the color selection dialog box.

Transparent Text

Select this option for clear watermark text that reveals the document underneath.

As Outline Only

Select this option to print the text as an outline.

Border

You can apply a border around the text.

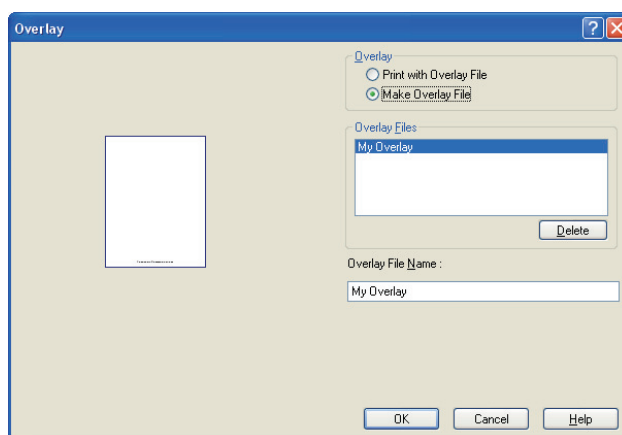
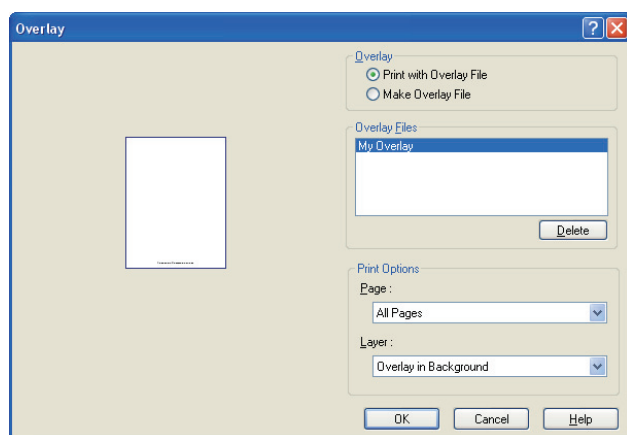
| | |
|---------------|-----------------------------|
| None | No border. |
| Circle | Print the text in a circle. |
| Square | Print the text in a square. |

Note:

- Watermark data is saved for individual users who are logged on. Those created by other users are not listed.
- The feature is not enabled if the **Poster** is selected on the **Basic** tab. (See page 15)
- The saved watermark lists will not be deleted when the PCL 6 Emulation Printer Driver, or the Standard Printer Driver is uninstalled. The watermark lists will automatically be recognized if the PCL 6 Emulation Printer Driver, or the Standard Printer Driver of the same model is installed again.
- The following characters are not available for the Watermark file name.
 \ / * ? ; : . " < > |
- (For Standard Printer Driver)
 When using the Watermark function select **Dither** for the **Halftone** in the **Quality** Tab.
- (For PCL6 Emulation Printer Driver)
 When using the Watermark function, select **Vector** for the **Graphics Mode** in the **Quality** Tab.

■ Overlay

Your registered images can be printed in the document foreground or background. It's easy to enhance documents with your company name or logo.



Note:

These are sample screens.

Availability of the printer features are different depending of the models or the operating systems.

Preview

For previewing the overlay file selected in the list. The preview does not display until the overlay is created.

Print with Overlay File

Print with an overlay. Select an overlay file and configure the Print Options settings.

Make Overlay File

Make the new overlay file. The first page will be saved (without printing) as overlay data.

Note:

Only the first page of multi-page documents can be used as overlay data.

Overlay Files

List the overlay files that have been created. A preview of the selected overlay file is displayed on the left of the dialog box.

Delete button

Delete the selected overlay file.

Page

Specifies which pages to print.

| | |
|-------------------------|---|
| All Pages | Print the overlay on all pages. |
| 1st Page Only | Print the overlay only on the first page. |
| All but 1st Page | Print the overlay on every page except the first. |
| Odd Pages | Print the overlay only on odd pages. |
| Even Pages | Print the overlay only on even pages. |

Continue on the next page...

Layer

Specifies the order to print layers (the overlay file and the document).

| | |
|------------------------------|---|
| Overlay in Background | Prints the overlay in the background, under the document. |
| Overlay in Foreground | Prints the overlay in the foreground, over the document. |

Overlay File Name

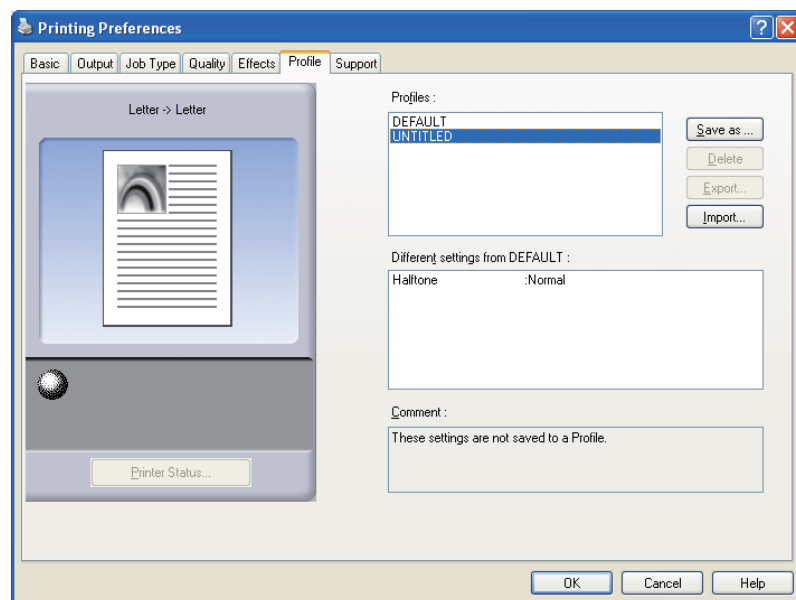
Enter the name of overlay file up to 63 single-byte characters.

Note:

- The following characters are not available for the Overlay File Name.
`\ / * ? : ; . " < > |`
- Overlay file is saved for individual users who are logged on.
- The feature is not enabled if the **Poster** is selected on the **Basic** tab. (See page 15)
- The saved overlay files will not be deleted when the PCL 6 Emulation Printer Driver, or the Standard Printer Driver is uninstalled. The overlay files will automatically be recognized if the PCL 6 Emulation Printer Driver, or the Standard Printer Driver of the same model is installed again.

Profile Tab

Registering the current settings as a profile makes it easy to recall the settings next time you print. The frequently used settings you save as profiles are easily adjustable as required.



Note:

*This is a sample screen.
Availability of the printer features are different depending of the models or the operating systems.*

Paper Size

Displays the current **Paper Size** and **Output Paper Size** settings.

Paper Image

Represents the current settings, along with the icons shown below.

Icons

Represent the current settings, along with the paper image shown above.

Printer Status... button

Used to check the printer status, launch the **Device Monitor**, which displays the status. This feature is only available when the printer is connected over a TCP/IP network.

Profiles

List the profiles that have been created. **DEFAULT** is the factory setting. **UNTITLED** is the current setting that has not been saved.

Save as... button

Save the current settings. The profile is named and comments can be added before saving. If the name of an existing profile is used, that profile is overwritten.

Enter 31 single-byte characters or less for the profile name, 127 or less for the comment.

If you select **Do not save Paper Size and Orientation**, **Paper Size** and **Orientation** will not be saved in the profile. These Paper settings are also configured in each software applications, so it is advisable to check **Do not save Paper Size and Orientation** before saving the profiles.

Note:

- **DEFAULT** and **UNTITLED** cannot be used as profile names.
- The saved profiles will not be deleted when the PCL 6 Emulation Printer Driver, or the Standard Printer Driver is uninstalled. The saved user profiles will automatically be recognized if the PCL 6 Emulation Printer Driver, or the Standard Printer Driver of the same model is installed again.

Continue on the next page...

Delete button

Deletes the selected profile.
Settings details of the deleted profile will be retained in the **UNTITLED** profile until the settings are changed.

Note:

*The profiles **DEFAULT** and **UNTITLED** cannot be deleted.*

Export... button

Saves the selected profile as a file.

Note:

*The profiles **DEFAULT** and **UNTITLED** cannot be exported.*

Import... button

Loads an exported profile and adds it to the list of profiles.

Different settings from DEFAULT

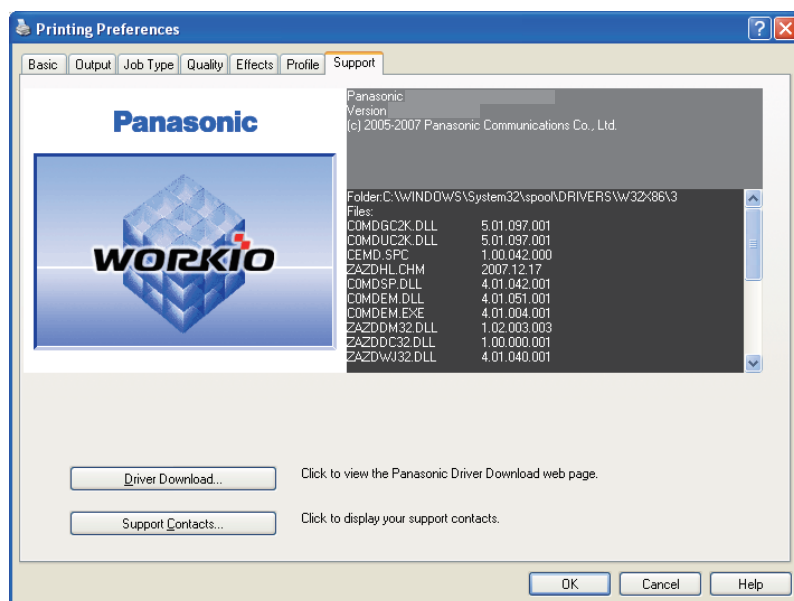
Displays the differences between the current setting and the default setting.

Comment

Displays comments about the profile.

Support Tab

Displays the printer driver version and various support information.



Note:

This is a sample screen.

Availability of the printer features are different depending of the models or the operating systems.

Version Information

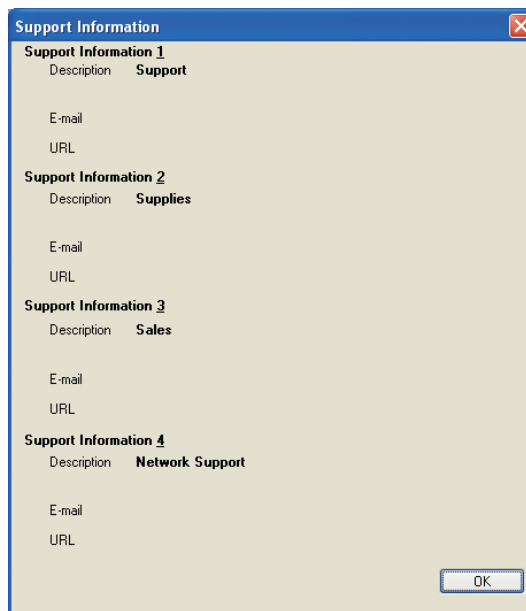
Displays the version of printer driver configuration files.

Driver Download... button

Launches the default web browser and accesses the manufacturer's download site to download the latest Printer Driver.

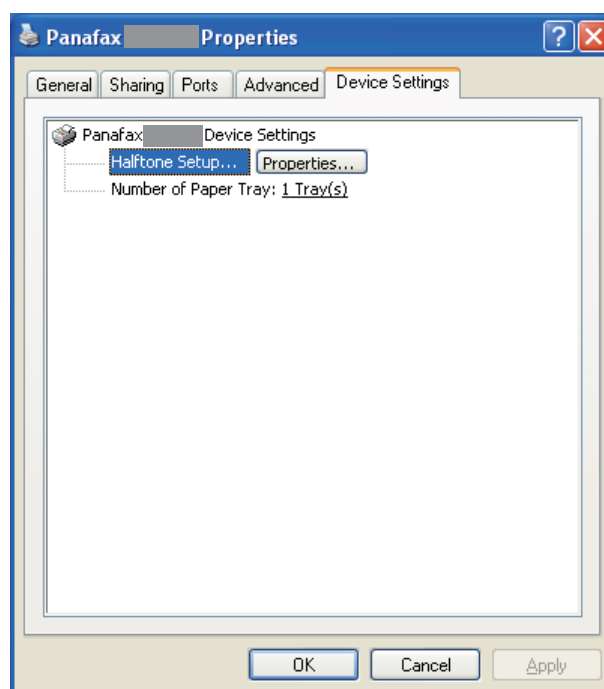
Support Contacts... button

Displays the dialog box with support information registered in the driver.



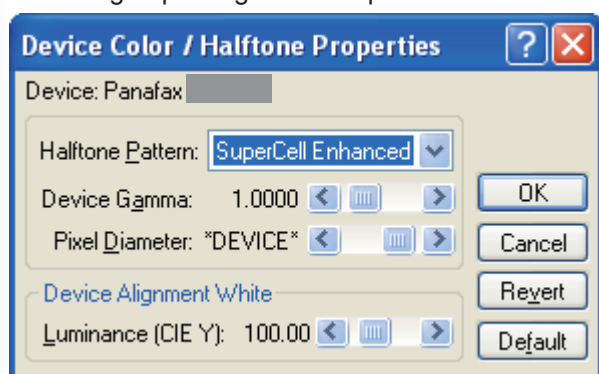
Printing Preferences (For DX-800)

■ Device Settings Tab



Half-tone Setup... Properties... button

Select the method of expressing device halftone (printer-specific halftone). Select the settings according to printing data and preference.



• Halftone Pattern

Select the pixel size to be used for halftones. The greater the value, the coarser the image would become. However, a larger value is suited to printing in large areas. The Enhanced pattern allows printing at a higher resolution using the same number of pixels. However, the pattern might generate unnatural lines, patterns, moire effects, and so on depending on the image to be printed.

• Device Gamma

Adjust the gamma of print images (color intensities).

• Pixel Diameter

Adjust the darkness of the print image. Manipulate the slider to specify the pixel size. You can select between specifying the real size in inches or specifying in percentage relative to the printer resolution.

• Luminance (CIE Y)

Adjust the luminosity of the print image.

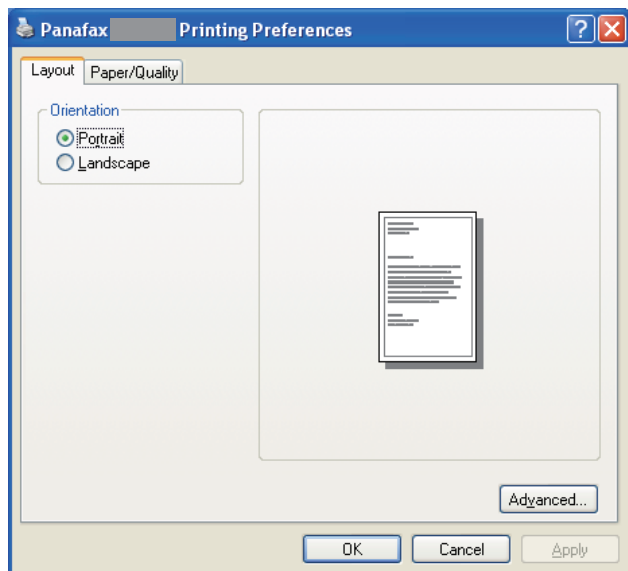
Number of Paper Tray

Select the number of available paper trays for the printer if an optional Paper Feed Module is installed.

Note:

- **Device Settings** Tab specifies device-specific settings and settings of optional devices. Refer to operation manuals of the optional devices, or on-line manuals for settings items.
- Settings specified in this section are saved as standard (default) settings of the printer.

■ Layout Tab

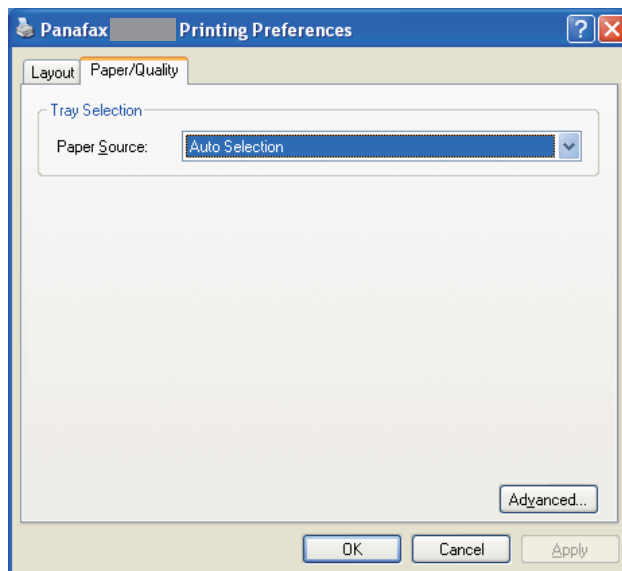


Orientation

Select the print orientation (Portrait/Landscape).

Advanced... button
Specify detailed settings.

■ Paper/Quality Tab

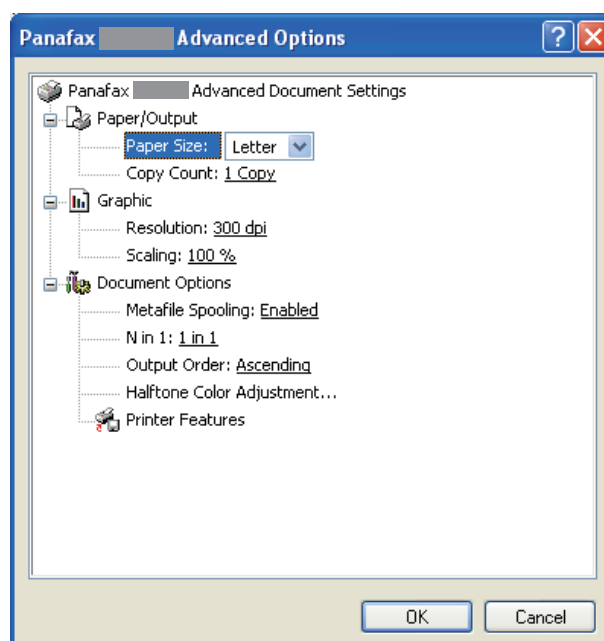


Paper Source

Specify where the paper you want to use is located in the machine. If you choose Auto Selection, the printer driver will automatically select an appropriate tray according to the Paper Size.

Advanced... button
Specify detailed settings.

■ Advanced



Paper Size

Select a document size.

Resolution

Select the printer resolution (300dpi/600dpi).

Scaling

Specify custom zoom when printing a document by zooming in/out at a desired rate. If the zooming rate is specifiable in an application, specify "100%" (same size) here. Specify a zooming rate in the print dialog box of the application.

Metafile Spooling

With Metafile Spooling enabled, the file is spooled in EMF format (metafile compression). With the function disabled, the file is spooled in RAW (non-compression) format. Specifying RAW format results in longer time before placing an application operational after printing on the application.

Note:

Spooling by EMF format may cause the following problems on some application software.

- 1) Printing result is different from the screen display.
- 2) Printing requires excessive time.

N in 1

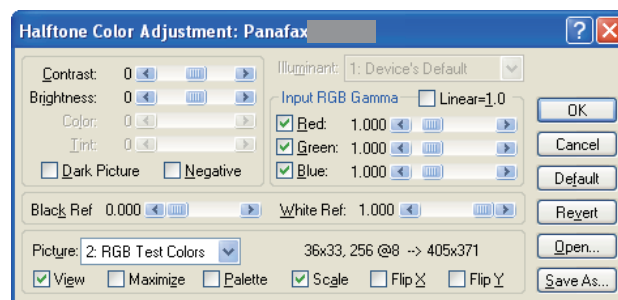
For printing two or more pages on one sheet, specify a printing method.

Layout is selected by combining with "Orientation."

2 in 1 : Print 2 pages of documents zoomed out on one sheet.

4 in 1 : Print 4 pages of documents zoomed out on one sheet.

Halftone Color Adjustment



• Contrast

Adjust the contrast of print images.

• Brightness

Adjust the brightness of print images.

• Dark Picture

Select this option in order to print dark images brighter.

- **Negative**

Select this option in order to print images with black and white reversed.

- **Input RGB Gamma**

Adjust the gamma of print images (color intensities). Red, Green and Blue can also be adjusted individually.

- **Black Ref/White Ref**

Adjust the difference between the darkest and lightest colors of an image. Increasing the Black Ref value or decreasing the White Ref value will intensify the contrast of the image but reduces the range of colors in between.

- **Picture**

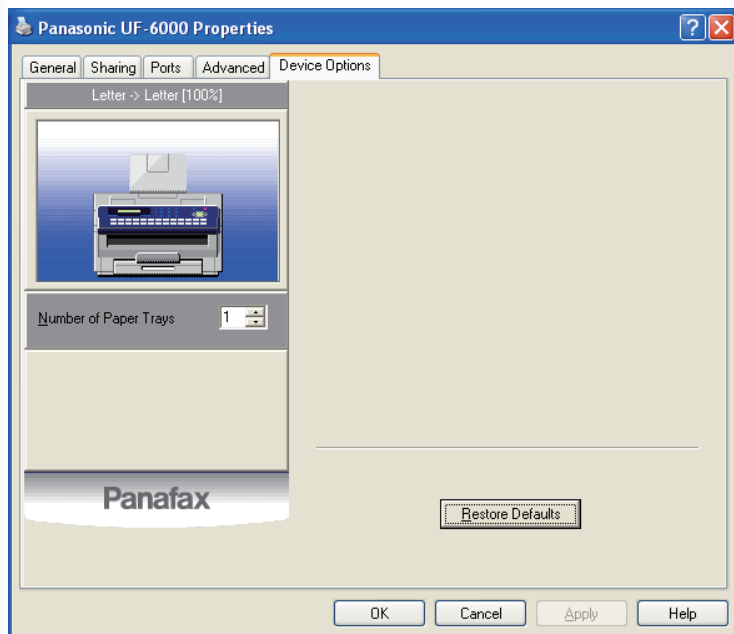
Select a test pattern type.

Selecting the View check box will display halftone adjustment results in the test pattern.

Printing Preferences (For UF-4000/4100/6000/6100)

■ Device Options Tab

Used for configuring optional devices installed on the printer.



Note:

*This is a sample screen.
Availability of the printer features are different
depending of the models or the operating
systems.*

Number of Paper Trays

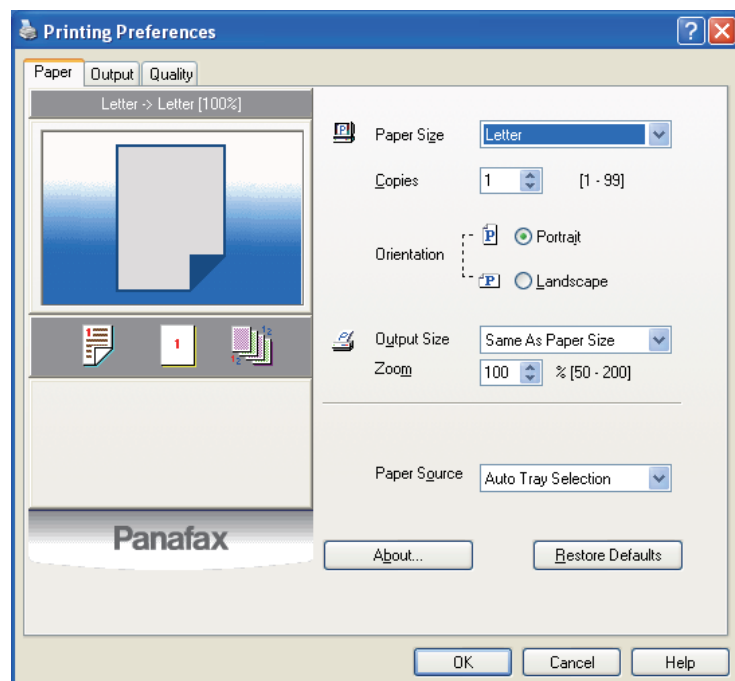
Specifies the number of paper trays installed on the device.

Restore Defaults button

Restores all Device tab settings to the factory default values.

■ Paper Tab

Paper tab is used for configuring basic printing settings.



Note:

*This is a sample screen.
Availability of the printer features are different
depending of the models or the operating
systems.*

Paper Size / Output Paper Size

There are two settings for paper size. They are **Paper Size** and **Output Paper Size**. **Paper Size** denotes the document size created by the software applications. **Output Paper Size** denotes the size of paper used by the printer.

Copies

Specifies the number of copies to be printed.

Orientation

Specifies the direction of the image to be printed.

Zoom

Specify an enlargement or reduction percentage when printing documents. If enlargement/reduction can be set within the application, indicate 100% here and specify the enlargement/reduction percentage in the Print dialog box of the application.

Paper Source

Specify where the paper you want to use is located in the device. If you choose **Auto Tray Selection**, the

printer driver will automatically select an appropriate tray according to the **Paper Size** selected.

Note:

Be sure to specify on the printer what paper is loaded in the trays. If the settings are wrong, paper will not be supplied correctly when the printer driver is set to Auto Tray Selection.

About... button

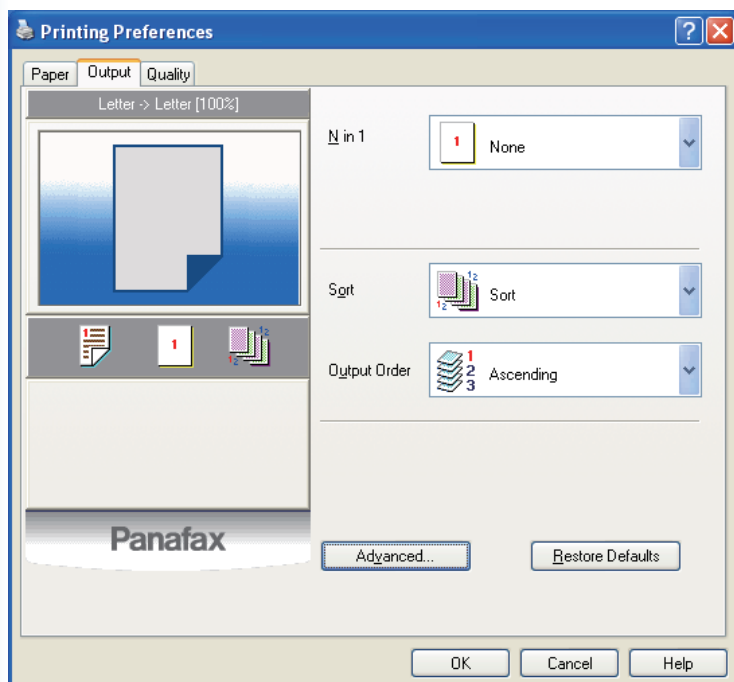
Displays the dialog box with the driver file version.

Restore Defaults button

Restores each tab settings to the factory default values.

■ Output Tab

Output tab is used for configuring output settings.



Note:

*This is a sample screen.
Availability of the printer features are different
depending of the models or the operating
systems.*

N in 1

Specify the layout pattern for printing multiple documents on a single sheet of paper. If you select an item other than **None**, N in 1 order is displayed, allowing you to select the following patterns.

Sort

Select whether to Stack (**Non Sort**) or **Sort** when printing the multiple copies.

Note:

If the collation can be specified within the application, clear the collation setting of the application to make this setting effective.

Output Order

Specify the output order (Ascending/Descending).

Advanced... button

Displays the Advanced dialog box with the following settings:

Print All Text as Black

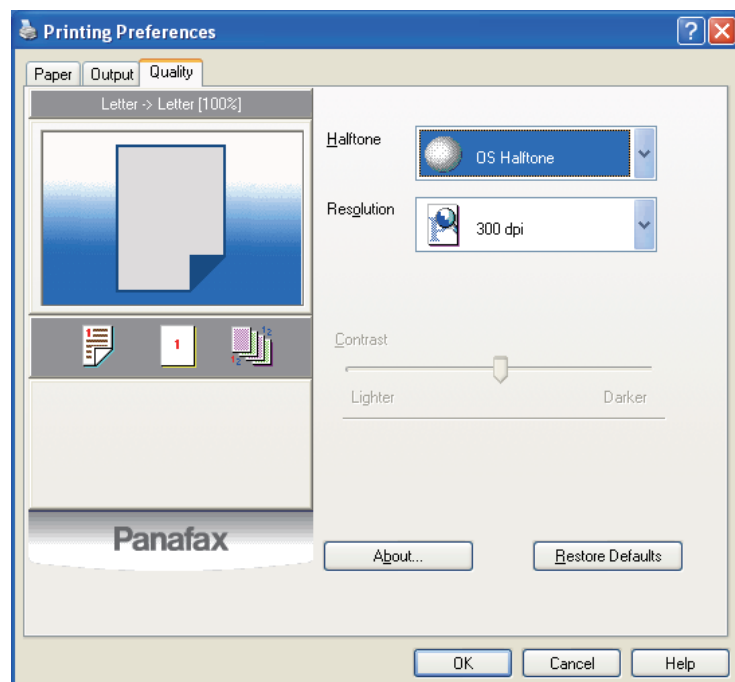
All colored text is printed as solid black.

Restore Defaults button

Restores each tab settings to the factory default values.

■ Quality Tab

Quality tab configures the settings that determine the print quality.



Note:

This is a sample screen.

Availability of the printer features are different depending of the models or the operating systems.

Halftone

Adjust the Halftone Color of print images.

Resolution

Specifies the printing resolution. Choosing a higher resolution improves the print quality but slows printing.

Note:

dpi (dots per inch) represents the number of dots contained in one inch. The larger the value, the higher the resolution would be.

Contrast

Defines the darkness of the dots placed on the paper.

Print Operation

■ Printing from Windows Applications (Local/Network)

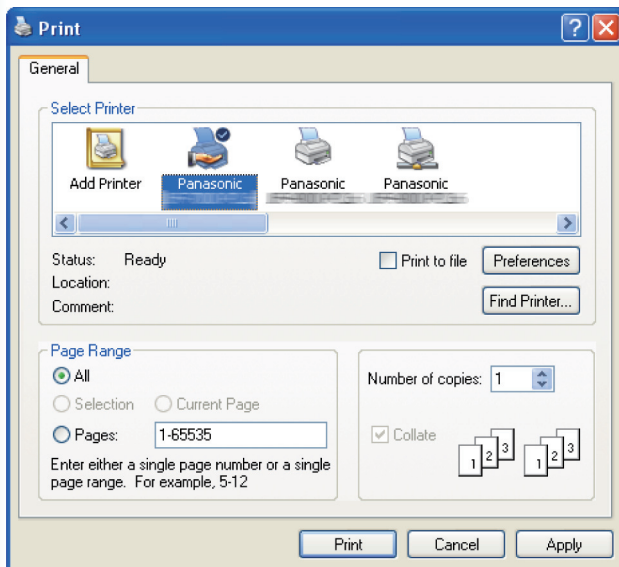
If the printer driver installed properly and is selected as the default printer in the printer setup, printing from any Windows application is a simple operation.

When sharing a printer by connecting two or more computers via network, a connection between the computers can be verified by displaying the connected computers in the Network Neighborhood on the desktop. The network printer correctly connected can be treated just like the local printer (The cable mark has adhered to the icon of the network printer).

Note:

Refer to the explanation on how to specify printer sharing settings in another provided document, the *Operating Instructions (For Setting Up)*.

To print from most Windows applications, use the **Print** command in the **File** menu. Selecting the Print command typically displays the Print dialog box.



Setup your preferred configuration (page range, number of copies, etc.) first, and then click the **Print** button to start printing.

While documents are being printed, a printer icon appears in the System Tray near the clock in the bottom right hand corner of the screen. The icon disappears when printing is completed.

You may double-click the printer icon in the system tray to open and verify the details of the print queue.

Note:

If more than one printer is installed on your PC, follow the steps below to set a default printer:

1. Open the Printer Dialog Box.

Windows XP/Windows Server 2003 : Select **Start** → (**Settings**) → **Printers and Faxes**

Windows 2000 : Select **Start** → **Settings** → **Printers**

Windows Vista : Select **Start** → **Control Panel** → **Printers**

2. The Printers and Faxes (Printers) window appears.

Right-click the desired printer icon, and then select **Set as Default Printer** in popup menu. The check mark next to the printer icon denotes a Default Printer.

■ IPP (Internet Printing Protocol) Printing

Prints documents from a machine located in a remote area via the Internet without its access being blocked by a proxy server.

Note:

- It is necessary to install **RPT Network Printer Port** beforehand to setting up IPP Printing.
- IPP(Internet Printing Protocol) Printing is not available for Standard Printer Driver.

1 Open the Printer Dialog Box.

Windows XP/Windows Server 2003 : Select **Start** → **(Settings)** → **Printers and Faxes**
 Windows 2000 : Select **Start** → **Settings** → **Printers**
 Windows Vista : Select **Start** → **Control Panel** → **Printers**

2 The Printers and Faxes (Printers) window appears.

Right-click the printer icon that you want to configure, and select **Properties**.

3 The Printer Properties dialog box appears.

Select **Ports** tab, and click the button.

4 The Printer Ports dialog box appears.

Select **RPT Network Printer Port** and click the button.

5 The RPT Network Printer Port Wizard appears.

Select **Print using IPP**, and click the button.

6 Select **Connect using a local area network**, and click the button.

7 Select **Do not print using a proxy server**, and click the button.

8 Input the Printer's IP address after the "http://", and add "/printer" at the end.

(Ex : http://133.185.254.106/printer)

Click the button to proceed.

9 Verify that the Destination print port name is OK (change if necessary), and click the button.

10 Click the button.

11 Close the Printer Ports dialog box, and check the new port has been added.

■ Mailbox and Secure Mailbox Printing

The document printed adding **User ID** (and **Password**) with the printer driver is stored in the **Mailbox** (or **Secure Mailbox**) of the printer.

To retrieve (print) the document, you must enter the **User ID** (and **Password**) at the printer's operation panel.

Saving a document data (from a PC)

- 1 Select **Print** in the **File** menu of the application. (Ex: Microsoft® WordPad)
- 2 Click the button in the Print dialog box.
- 3 Click the **Job Type** tab in the Printing Preferences dialog box.
- 4 Check the "Mailbox" or the "Secure Mailbox", and enter the **User ID** (up to 8 digits) and the **Password** (4 digits).
- 5 Click the button to close the Printing Preferences dialog box.
And then click the button in the Print dialog box. The document data is stored into the **Mailbox** or the **Secure Mailbox** of the printer.

Retrieve a document data (from a printer's operation panel)

Follow the procedure below to print a file from a Mailbox or Secure Mailbox on your machine.

Note:

The detailed operating procedure is different depending on the model.

Refer to the Operating Instructions of the printer when it is necessary to select the function number for the Mailbox and Secure Mailbox Printing.

- 1 Press the key to set in to the printer mode.
Print display appears on the printer control panel.
- 2 Enter the mailbox **User ID** number (up to 8 digits) from the keypad.
The display shows the saved document data in the selected mailbox.
- 3 Choose the document you want to print, and press the .
When you want to delete the document, press the .
- 4 **(Secure Mailbox only)**
Enter the secure mailbox **Password** (4 digits) from the keypad.

Memo

Troubleshooting

■ Printing Operation Failure

If the printing operation fails, check the following items first:

- Ensure the connecting cable (USB, Parallel, or Ethernet LAN cable) is properly connected.
- Power of the device is turned ON.
- Paper is loaded properly in the device.
- An error message is not displayed on the device.

The above points can be verified by printing a test page on the following procedures.

1 Open the Printer Dialog Box.

Windows XP/Windows Server 2003 : Select **Start** → (**Settings**) → **Printers and Faxes**
Windows 2000 : Select **Start** → **Settings** → **Printers**
Windows Vista : Select **Start** → **Control Panel** → **Printers**

2 The Printers and Faxes (Printers) window appears. Right-click the printer icon that you want to configure, and select **Properties**.

3 The Printer Properties dialog box appears. Select **General** tab, and then click Print Test Page button.

■ Documents Not Printing Correctly

| Problem | Possible Cause / Solution(s) |
|---|--|
| Characters are not printed in the correct positions or the characters near the edges of the page are missing. | <ul style="list-style-type: none"> - Check and specify the paper size and the orientation settings in the printer driver to coincide with the application. - The characters are set outside the printing area of the machine. |
| Incorrect font type. | <ul style="list-style-type: none"> - Check whether the selected font is installed on the PC. - Enable "Use Device Fonts" of the Font dialog box in the Quality Tab. (For PCL 6 Emulation Printer Driver.) |
| Printing stops in the middle of the run. | <ul style="list-style-type: none"> - Check whether there is a Network problem. |
| Although print data is transferred to your machine, it does not print. | <ul style="list-style-type: none"> - Make sure the printer is online. - Make sure the machine is not in the Shutdown Mode. Press ENERGY SAVER key to return to standby mode. See the Operating Instructions for Copy and Function Parameters for details. - Make sure the Printer cable is connected properly. - Restore the power if the On line LED is Off even if the USB printer cable is connected. |
| Incorrect Output Image. | <ul style="list-style-type: none"> - Set Raster for the Graphics Mode in the QualityTab. (For PCL 6 Emulation Printer Driver.) - When the custom paper size is set in the Paper tab, configure the paper in portrait format. |
| Printing operation takes excessive time. | <ul style="list-style-type: none"> - The wait time for printing operations depends on the spool settings. Set Advanced tab in the Printer Properties dialog box. |
| Paper exits from the unexpected paper tray. | <ul style="list-style-type: none"> - If the paper runs out from the paper tray specified by the user, the machine automatically switches to the paper tray which contains the same paper size by default. See the Operating Instructions for Copy and Function Parameters for disable the automatic paper tray select function. |

■ Error Messages Displayed on the Computer

| Problem | Possible Cause / Solution(s) |
|---|---|
| Error writing to USB. Unable to write to the Specified device. | <ul style="list-style-type: none">- Verify that the device is connected to the computer correctly.- Verify that the power of the device is turned On. |
| Error writing to USB. Printer timeout error occurred. | <ul style="list-style-type: none">- Verify that the power of the device is turned On.- Excessive data volume or number of pages may overflow the device's memory, disabling data reception.- Increase the timeout setting value in properties (for transmission retry). |
| Printing is disabled due to an error in the current printer settings. | <ul style="list-style-type: none">- Mismatch in settings such as paper size or printing orientation exist between the application and the printer driver.- Correct the settings. |

Memo

USA Only

WARRANTY

PANASONIC COMMUNICATIONS COMPANY OF NORTH AMERICA MAKES NO WARRANTIES, GUARANTEES OR REPRESENTATIONS, EXPRESSED OR IMPLIED, TO THE CUSTOMER WITH RESPECT TO THIS PANASONIC MACHINE, INCLUDING BUT NOT LIMITED TO, ANY IMPLIED WARRANTY OF MERCHANTABILITY OR FITNESS FOR A PARTICULAR PURPOSE.

PANASONIC COMMUNICATIONS COMPANY OF NORTH AMERICA ASSUMES NO RISK AND SHALL NOT BE SUBJECT TO LIABILITY FOR ANY DAMAGE, INCLUDING, BUT NOT LIMITED TO DIRECT, INDIRECT, SPECIAL, INCIDENTAL OR CONSEQUENTIAL DAMAGES OR LOSS OF PROFITS SUSTAINED BY THE CUSTOMER IN CONNECTION WITH THE USE OR APPLICATION OF THIS PANASONIC MACHINE. SEE YOUR DEALER FOR DETAILS OF DEALER'S WARRANTY.

For Service, Call: _____

Panasonic Communications Company of North America,
Unit of Panasonic Corporation of North America
One Panasonic Way
Secaucus, New Jersey 07094
<http://panasonic.co.jp/pcc/en/>

Panasonic Canada Inc.
5770 Ambler Drive
Mississauga, Ontario L4W 2T3
<http://www.panasonic.ca>

For Customer Support (Except for
USA and Canada Users):
Panasonic Communications Co., Ltd.
Fukuoka, Japan
<http://panasonic.net>

K0108-0 (08)
PJQMC1138ZA
January 2008
Published in Japan